

Inspired by M. Roger Holland

FEED US, LORD

SATB Choir, Cantor, Assembly, Guitar, Keyboard

W. Clifford Petty

Piano trans. by Thomas W. Jefferson

INTRODUCTION

♩ = c. 75

E \flat /D \flat A \flat /C A \flat m/C \flat E \flat /B \flat

A \flat 7 A \flat /B \flat B \flat /D E \flat A \flat /C B \flat

VERSES 1, 2

Cantor/Choir/Assembly

5 *mf*

1. Thank you for — this bread we break; it is — the Bod - y of Christ.
 2. Thank you for — the sac - ri - fice you gave — on Cal - va - ry. —

E \flat A \flat /E \flat B \flat /E \flat E \flat Gm7 Cm7 A \flat 7 A \flat /B \flat

mf

001271

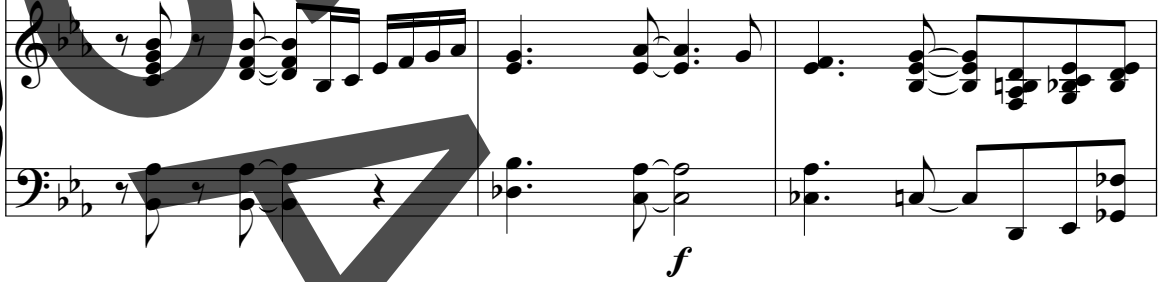
Click & Print download e01271 may be purchased at wlpmusic.com.

8



1. — Thank you for — this cup we take, your
2. — Thank you for — the price you paid, the

A^bmaj7/B^b B^b7 E^b/D^b A^b/C A^bm/C^b Cm7 G^b+7

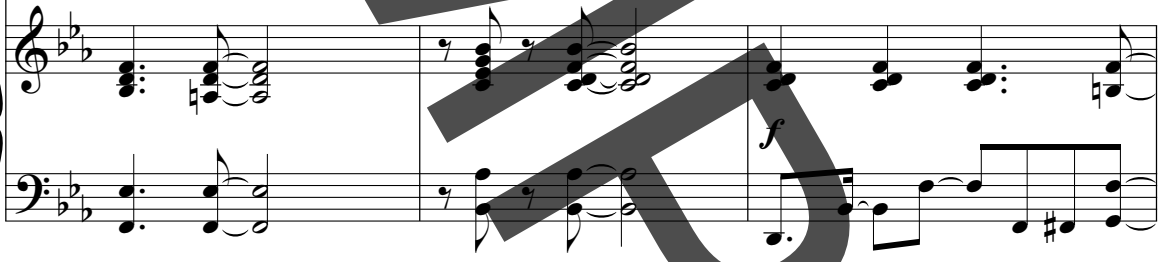


11



1. blood — shed for us. — Let us feast — on — the bread
2. ran - som for — my sins. — My — wor-ship and praise — can

F7sus F13 A^bmaj7/B^b B^b9 Dm7 B^b(add2) G7



14



1. — of life — and drink from the cup — of sal - va -
2. nev - er re - pay — the debt — of love — I owe.

A7(^{#5}/₉) A^bmaj7 B^b/A^b B^b



16 *mf*

1. - tion un - til he comes, un -
 2. Lord, I give my-self to you. It is

E^b(add2)/G B^bm7 E^b A^bmaj7 B^b/A^b D7(^{#5}) G7(^{#5}) C7(^{#9})

19

1. til he comes a - gain.
 2. all that I can do!

Fm7 B^b7sus E^b/D^b A^b/C A^bm/C^b E^b/B^b

22

F13 B^b9 D^b/E^b E^b D^b/E^b E^b

REFRAIN

24

ff

S.A.
Feed us, Lord — Feed us, Lord

T.B.
ff

ff

A^b B^b9 E^b/G A^b maj7 D7(^b9) G7(^b9) C(add2)

27

Feed us with — your Bod - y. —

D^b/F E^b/G A^b(add2) E^b(add2) Cm7 G^b7

30

Feed us with your Blood.

Detailed description: This block contains the first system of music, measures 30 and 31. It features a vocal line and a piano accompaniment. The vocal line is in a soprano clef with a key signature of two flats (B-flat major/D minor) and a 4/4 time signature. The lyrics are "Feed us with your Blood." The piano accompaniment consists of two staves, with the right hand playing chords and moving lines, and the left hand playing a steady bass line. A large, semi-transparent watermark "SAMPLE" is overlaid diagonally across the page.

F9sus F9 B^b7sus B^bm7 E^b7

Detailed description: This block shows the piano accompaniment for measures 30 and 31. It includes two staves: a right-hand staff with chords and melodic lines, and a left-hand staff with a bass line. The chords are labeled as F9sus, F9, B^b7sus, B^bm7, and E^b7. A large, semi-transparent watermark "SAMPLE" is overlaid diagonally across the page.

32

Feed us, Lord. Feed us, Lord.

Detailed description: This block contains the second system of music, measures 32 and 33. It features a vocal line and a piano accompaniment. The vocal line is in a soprano clef with a key signature of two flats (B-flat major/D minor) and a 4/4 time signature. The lyrics are "Feed us, Lord. Feed us, Lord." The piano accompaniment consists of two staves, with the right hand playing chords and moving lines, and the left hand playing a steady bass line. A large, semi-transparent watermark "SAMPLE" is overlaid diagonally across the page.

A^b B^b9 E^b/G A^bmaj7 D7(^b₉) G7(^b9) C(add2)

Detailed description: This block shows the piano accompaniment for measures 32 and 33. It includes two staves: a right-hand staff with chords and melodic lines, and a left-hand staff with a bass line. The chords are labeled as A^b, B^b9, E^b/G, A^bmaj7, D7(^b₉), G7(^b9), and C(add2). A large, semi-transparent watermark "SAMPLE" is overlaid diagonally across the page.

35 *f* unison

Feed us bread of ev-er - last-ing life__ till our

f unison

D^b/F A7(⁹) A^bmaj7 D7^b9 Gm C7^b9 B^b/D C/E

f

38

souls are sat - is - fied.

Fm7 B^b7sus E^b/D^b A^b/C A^bm/C^b E^b/B^b

41

1. F13 C^b9 A^b/B^b B^b/D E^b To Verse 2 2. F13 C^b9 A^b/B^b B^b

A^b/C B^b/D

BRIDGE

44

S. Feed us life-giv-ing bread and your sav - ing cup;— your

A. *1st time tacet*
Lord, we thank you for your Bod - y.

Chords: C^b7, E^b/B^b, E^b/D^b, A^b/C, A^bm/C^b, E^b/B^b

47

S. Bod - y and Blood shed and bro - ken for us. Feed us

A. Lord, we thank you for your Blood. We thank you.

Chords: E^b/D^b, A^b/C, A^bm/C^b, E^b/B^b

49

S. life - giv - ing bread_ and your sav - ing cup, — your

A. Lord, we thank you for your Bod - y.

T. *1st time tacet* Feed_ us. Lord, feed_ us.

B. Feed us, Lord. Feed us, Lord.

E^b/D^b A^b/C A^bm6/C^b E^b/B^b

51

1. Bod - y and Blood shed and bro - ken for us. — Feed us

Lord, we thank you for your Blood. We thank you.

8 Feed_ us. Lord, feed_ us.

1. E^b/D^b A^b/C A^bm6/C^b E^b/B^b

53

2.

Bod - y and Blood - shed and bro - ken for us. —

Lord, we thank - you for your Blood.

8

Feed - us. Lord, feed - us.

Feed us, Lord. — Feed us, Lord. —

2.

E^b/D^b A^b/C A^bm/C^b E^b/G A7(^b₉)

FINAL REFRAIN

55

ff

Feed us, Lord. — Feed us, Lord.

ff

A^b B^b9 E^b/G A^bmaj7 D7(^b₉) G7(^b₉) C(add2)

58

Feed us with your Bod - y, —

This block contains the vocal line for measures 58-60. The melody is in a minor key with a key signature of two flats. The lyrics are "Feed us with your Bod - y, —". The notes are: G4 (quarter), A4 (quarter), Bb4 (quarter), C5 (quarter), Bb4 (quarter), A4 (quarter), G4 (quarter), F4 (quarter), E4 (quarter), D4 (quarter), C4 (half).

D^b/F E^b/G A^b(add2) E^b(add2) Cm7 G^b7

This block contains the piano accompaniment for measures 58-60. The left hand plays a steady bass line with chords. The right hand plays a more active line with chords and moving lines. The chords indicated are D^b/F, E^b/G, A^b(add2), E^b(add2), Cm7, and G^b7.

61

feed us with your Blood. —

This block contains the vocal line for measures 61-63. The melody continues from the previous system. The lyrics are "feed us with your Blood. —". The notes are: C4 (half), D4 (quarter), E4 (quarter), F4 (quarter), G4 (quarter), A4 (quarter), Bb4 (quarter), C5 (quarter), Bb4 (quarter), A4 (quarter), G4 (quarter), F4 (quarter), E4 (quarter), D4 (quarter), C4 (half).

F9sus F9 B^b7sus B^bm7 E^b7

This block contains the piano accompaniment for measures 61-63. The left hand continues with a bass line. The right hand features more complex chordal textures and moving lines. The chords indicated are F9sus, F9, B^b7sus, B^bm7, and E^b7.

63

Feed us, Lord. — Feed us, Lord.

A^b B^b9 E^b/G A^b maj7 D7(^b5) G7(b9) C(add2)

66

f unison
Feed us bread of ev-er - last-ing life — till our

f unison

D^b/F A7^b5 A^b maj7 D7(^b5) Gm C7^b9 B^b/D C/E

69

souls are sat - is - fied. _____

Fm7 B^b7sus E^b/D^b A^b/C

71 A^bm/C^b E^b/B^b F13 C^b9 A^b/B^b B^b/D E^b

rit.

SAMPLE

If you hold a World Library Publications annual reprint license you may reproduce this assembly box. If not, please call 800 566-6150 to obtain reprint permission. Reprints must contain all the information that appears in the box, including the title, author, composer, and copyright notice.

Feed Us, Lord

W. Clifford Petty

VERSES 1, 2



1. Thank you for— this bread we break; it is—
2. Thank you for— the sac - ri - fice you gave—



1. — the Bod - y of Christ, — Thank you for— this
2. — on Cal - va - ry. — Thank you for— the



1. cup we take; your blood — shed for us. —
2. price you paid, the ran - som for — my sins. —



1. — Let us feast — on — the bread —
2. — My — wor - ship and praise — can



1. — of life — and drink from the cup — of sal - va -
2. nev - er re - pay — the debt of love — I owe.



1. — tion — un - til — he comes, un -
2. — Lord, I give my - self — to you. — It is



til he comes a - gain. —
all that I — can do! —

Assembly part continues on the following page.

Assembly part from previous page.

REFRAIN

Feed us Lord— Feed us Lord—
Feed us with your Bod - y— Feed us with
your Blood. Feed us, Lord.—
Feed us, Lord.— Feed us bread of ev - er -
last-ing life— till our souls are sat - is - fied.—

Copyright © 2016, World Library Publications. All rights reserved.

