

For Mary Dubay Buckman

LOVE ONE ANOTHER

Ámense, Unos a Otros

Two-Part Choir, Cantor, Assembly, Guitar, Keyboard
(optional C Instrument, Cello)

Tony Alonso

Ref.: Jn 13:34

Vrs.: T. A.

INTRODUCTION / INTRODUCCIÓN

Gently $\text{♩} = c. 88$

mp

Gm Csus C F/A B \flat

5

Women/Assembly
Mujeres/Asemblea *mf*

Men
Hombres

I
Les

Gm Csus C C/F B \flat /F F(add2) *mf*

REFRAIN / ESTRIBILLO

9

give_ you a new com - mand - ment, that you love_ one_ an -
doy un man - da - mien - to nue - vo, que se a - men u - nos a

F C/E Dsus Dm Dm/C Gm

005805

From the CD *I Shall Live* WLP 008463.

Click & Print download e05805 may be purchased at wlpmusic.com.

Optional instrument parts e05845 may be purchased at wlpmusic.com.

Text of refrain from the English translation of *The Roman Missal* © 2010, International Commission on English in the Liturgy Corporation.

All rights reserved.

Text of verses, Spanish text, and music copyright © 2012, World Library Publications

3708 River Road, Suite 400, Franklin Park, IL 60131-2158. All rights reserved.

Unauthorized duplication is against the law.

12

N.B.

oth - er as I have loved you, that you
o - tros co - mo yo los he a - ma - do, que se

N.B.

C(add2) C/B \flat F/A B \flat

15

To Optional Interlude or Coda \oplus
Al Interludio Opcional o Coda \oplus * To Verses/A las Estrofas

love one an - oth - er, says the Lord.
a - men u - nos a o - tros, di - ce el Se - ñor.

To Optional Interlude or Coda \oplus
Al Interludio Opcional o Coda \oplus * To Verses/A las Estrofas

Gm C(add2) C/F B \flat /F F(add2)

*Spanish verses can be found on page 6.

VERSES IN ENGLISH

19 *Cantor*

Musical staff for Cantor, measures 19-21. The staff shows a treble clef with a key signature of one flat (Bb) and a 4/4 time signature. The melody consists of quarter and eighth notes.

- 1. As he does so you must do:
- 2. Through your sorrow, joy, and pain:
- 3. Let your gentleness be known:
- 4. Leave behind what holds you bound:
- 5. Go and live the Gospel call:

Women/Assembly

Musical staff for Women/Assembly, measures 19-21. The staff shows a treble clef with a key signature of one flat (Bb) and a 4/4 time signature. The melody is mostly rests with some notes in measures 20 and 21.

1.-5. Love one an -

Men

Musical staff for Men, measures 19-21. The staff shows a bass clef with a key signature of one flat (Bb) and a 4/4 time signature. The melody is mostly rests with some notes in measures 20 and 21.

C/B^b

F/A

Dm

Gm

F/A

Piano accompaniment for measures 19-21. The left hand plays a simple bass line, and the right hand plays chords and moving lines. The dynamic marking is *mf*.

22

Musical staff for Cantor, measures 22-24. The staff shows a treble clef with a key signature of one flat (Bb) and a 4/4 time signature. The melody consists of quarter and eighth notes.

- 1. Just as he has first loved you:
- 2. Through your laughter, tears, and shame:
- 3. Reconcile the hurts you've known:
- 4. In its place let peace be found:
- 5. Wash the feet of one and all:

Musical staff for Women/Assembly, measures 22-24. The staff shows a treble clef with a key signature of one flat (Bb) and a 4/4 time signature. The melody is mostly rests with some notes in measure 23.

1.-5. oth - er.

Musical staff for Men, measures 22-24. The staff shows a bass clef with a key signature of one flat (Bb) and a 4/4 time signature. The melody is mostly rests with some notes in measure 23.

Csus

C

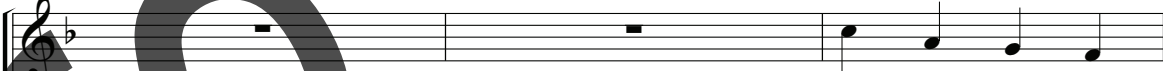
C/B^b

F/A

Dm

Piano accompaniment for measures 22-24. The left hand plays a simple bass line, and the right hand plays chords and moving lines.

25



- 1. Let your love be
- 2. Through your fear, let
- 3. Show the love our
- 4. Let the love of
- 5. Build - ing bridg - es,



1.-5. Love one an - oth - er.



Gm F/A Csus C C/B^b Am Dsus Dm

28

To Refrain



- 1. strong and true:
- 2. love re - main:
- 3. God has shown:
- 4. Christ a - bound:
- 5. break - ing walls:

To Refrain



1.-5. Love one an - oth - er. I



Gm A/C# Dm E^bmaj7 B^bmaj7/D Csus C B^b/C C

f *poco rit.*

To Refrain

ESTROFAS EN ESPAÑOL

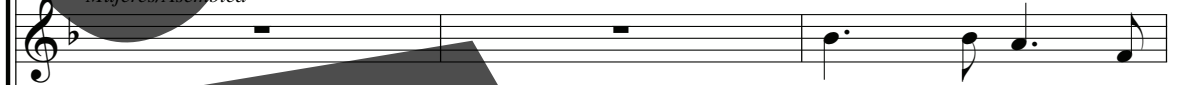
32

Cantor



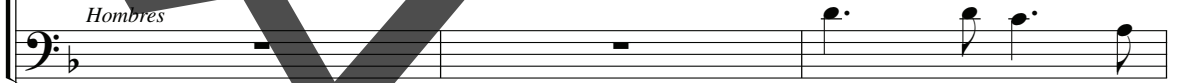
1. Ha - gan lo que él man - dó:
2. En el go - zo, en el do - lor:
3. Bus - quen re - con - ci - lia - ción:
4. A - ban - do - nen el ren - cor:
5. Vi - van siem - pre en la ver - dad:

Mujeres/Asemblea



1.-5. Á - men - se us -

Hombres

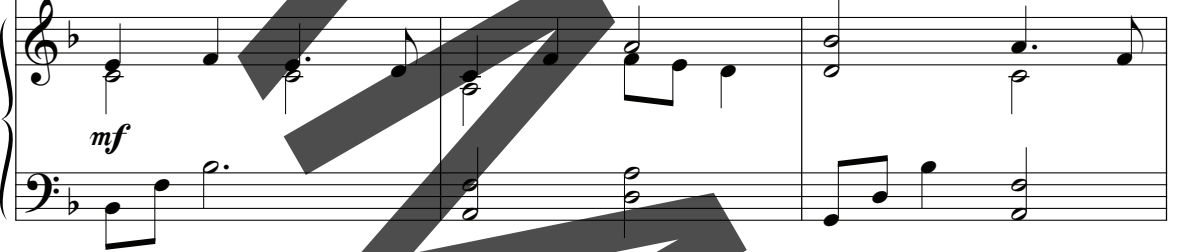
C/B^b

F/A

Dm

Gm

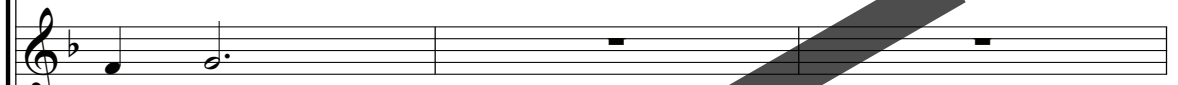
F/A

mf

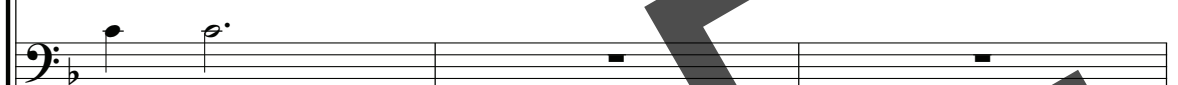
35



1. Co - mó él pri - me - ro a - mó:
2. En tris - te - za, en el hu - mor:
3. Sa - nen ya su co - ra - zón:
4. Naz - ca paz en su pri - mor:
5. En ser - vi - cio a los de más:



1.-5. te - des.



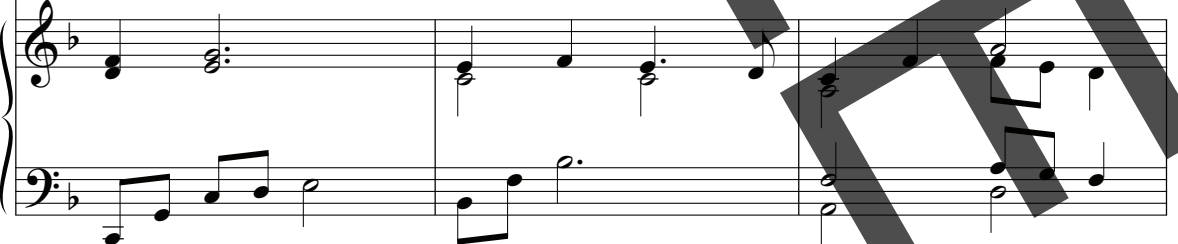
Csus

C

C/B^b

F/A

Dm



38

- 1. Con ver - dad y
- 2. An - te el mie - do
- 3. Co - mo Dios en
- 4. Se co - noz - ca el
- 5. Cons - tru - yen - do un

1.-5. Á - men - se us - te - des.

Gm F/A Csus C C/B^b Am Dsus Dm

41

Al Estribillo

- 1. con fer - vor:
- 2. rei - ne el a - mor:
- 3. la cre - a - ción:
- 4. Dios de a - mor:
- 5. mun - do de paz:

1.-5. Á - men - se us - te - des.

Al Estribillo

Les

Gm A/C# Dm E^bmaj7 B^bmaj7/D Csus C B^b/C C Al Estribillo

f

poco rit.

OPTIONAL INTERLUDE / INTERLUDIO OPCIONAL

45

Lord.
ñor.

C/B \flat F/A Dm Gm F/A C(add2)

mf

C/B \flat F/A Dm Gm F/A C(add2) C/B \flat

49

Am Dm Am Dm E \flat maj7 B \flat /D

53

C C/F B \flat /F F(add2)

57

To Verse / A las Estrofas

♩ CODA

61

Lord
ñor.

F C/E Dm Dm/C Gm

mp

64 C(add2) C/F B^b/F F

rit.

Engraved and printed in U.S.A.