

# THE LORD IS KING

## Psalm 93

SATB Choir, Cantor, Assembly, Guitar, Keyboard

Aaron Thompson  
Arr. by Ed Bolduc  
and Thomas W. Jefferson

### REFRAIN 1

Light gospel swing ♩ = 150

Cantor



Choir/Assembly

unison *mf*



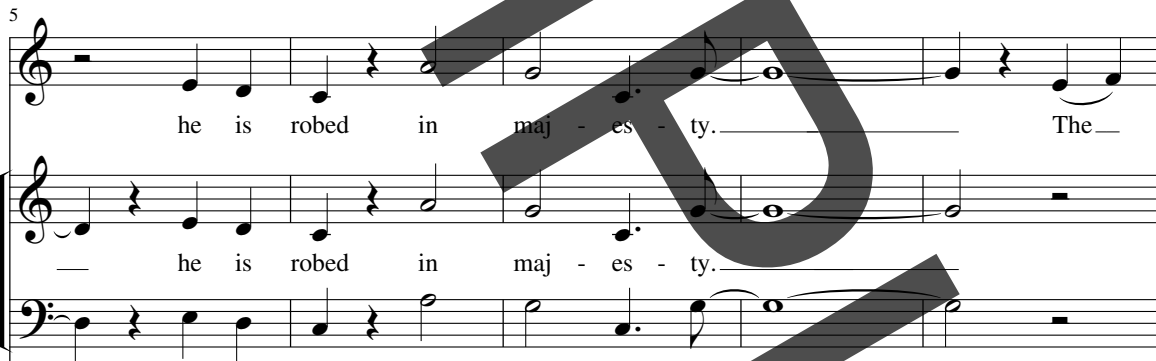
unison

*mf*



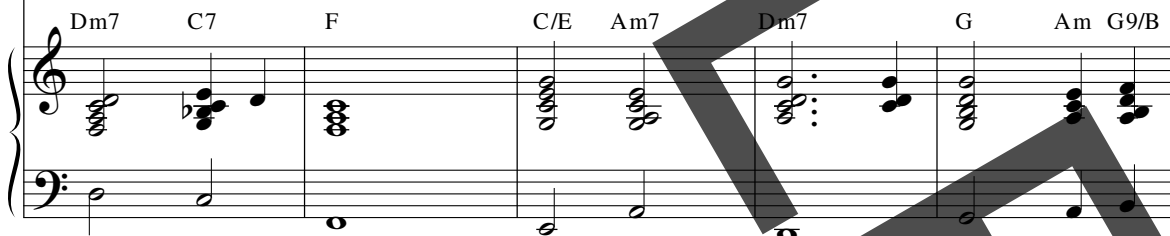
C Am7 Dm7 G7 C Am7

*mf*



he is robed in maj - es - ty. The —

— he is robed in maj - es - ty.



Dm7 C7 F C/E Am7 Dm7 G Am G9/B

006128

Click & Print download e06128 may be purchased at [wlpmusic.com](http://wlpmusic.com).

The English translation of the Psalm Response from *Lectionary for Mass* © 1969, 1981, 1997, International Commission on English in the Liturgy Corporation. All rights reserved.

Text of verses from the *Lectionary for Mass*, copyright © 2001, 1998, 1997, 1970, Confraternity of Christian Doctrine, Inc., Washington, DC. Used with permission. All rights reserved. No portion of this text may be reproduced by any means without permission in writing from the copyright owner.

Music copyright © 2011, 2014, Aaron Thompson. Published by World Library Publications  
3708 River Road, Suite 400, Franklin Park, IL 60131-2158. All rights reserved.

Unauthorized duplication is against the law.

10

Lord is king. The Lord is king; he is  
 The Lord is king; he is

C Am7 Dm7 G6 G7 Em E7/G# Am A7

14

robed in maj - es - ty. *To Verse 1*  
 Cantor 1. The *To Verse 1*  
 robed in maj - es - ty.

Dm7 C/G G F/C F/G *To Verse 1*

VERSE 1

18 *Cantor*

1. LORD is king, in splen - dor robed; — robed is the

C C/E Em7 F G C Em7 F G/F

23 1. LORD and girt a - bout with —

C/E C Dm7 G D/F# E/G# Am G F

27 1. strength, a - bout with strength. — The —

C/E C Gm7 C F Dm G Dm7 G G/A G/B

*To Refrain II*

REFRAIN 2

32 Cantor

Lord is king; — he is

Choir/Assembly

S.A.

The Lord is king; — he is

T.B.

C Am7 Dm7 G6 G7 C Am7 Dm7 C7

36

robed in maj - es - ty. — The —

robed in maj - es - ty.

F C/E Am7 Dm7 G Am G9/B

40

Lord is king. The Lord is king; he is

The Lord is king; he is

C Am7 Dm7 G6 G7 Em E7/G# Am A7

44

robed in maj - es - ty. *To Verse 2*

robed in maj - es - ty. *To Verse 2*

Dm7 C/G G F/C C E/G C *To Verse 2*

VERSE 2

48 Cantor

2. And he has made the world firm,

C C/E Em7 F G C Em7

2. not to be moved. Your

F G/F C/E C Dm7 G D/F# E/G#

2. throne stands firm from of old; from ev - er - last - ing

Am G F C/E C Gm7 C Fmaj7

2. you are, O LORD. The

Dm7 Gsus Gb6/Ab

REFRAIN 3

63 *Cantor*

Lord is king; — he is

*Choir/Assembly*

S.A. The Lord is king; — he is

T.B.

D<sup>b</sup> B<sup>b</sup>m7 E<sup>b</sup>m7 A<sup>b</sup>7 D<sup>b</sup> B<sup>b</sup>m7 E<sup>b</sup>m7 D<sup>b</sup>7

67 robed in maj - es - ty. The

robed in maj - es - ty.

G<sup>b</sup> D<sup>b</sup>/F B<sup>b</sup>m7 E<sup>b</sup>m7 A<sup>b</sup>

71

Lord is king. — The Lord is king; — he is

The Lord is king; — he is

D<sup>b</sup> B<sup>b</sup>m7 E<sup>b</sup>m7 A<sup>b</sup>7 Fm F7/A B<sup>b</sup>m B<sup>b</sup>7

75

robed in maj - es - ty. 3. Your de -

robed in maj - es - ty.

E<sup>b</sup>m7 D<sup>b</sup>/A<sup>b</sup> A<sup>b</sup> G<sup>b</sup>/D<sup>b</sup> D<sup>b</sup> G<sup>b</sup>/A<sup>b</sup> D<sup>b</sup>



VERSE 3

79 *Cantor*

3. crees are wor-thy of trust in - deed: ho - li - ness be -

D<sup>b</sup> D<sup>b</sup>/F Fm7 G<sup>b</sup> A<sup>b</sup> D<sup>b</sup> Fm7 G<sup>b</sup> A<sup>b</sup>/G<sup>b</sup>

84

3. fits your house, O LORD, for

D<sup>b</sup>/F E<sup>b</sup>m7 A<sup>b</sup> E<sup>b</sup>/G F/A B<sup>b</sup>m A<sup>b</sup> G<sup>b</sup>

88

3. length, O LORD, for length of days. The

D<sup>b</sup>/F D<sup>b</sup> A<sup>b</sup>m7 D<sup>b</sup> G<sup>b</sup> E<sup>b</sup>m7 A<sup>b</sup> E<sup>b</sup>m7 A<sup>b</sup> A<sup>b</sup>/E<sup>b</sup> A<sup>b</sup>/C

FINAL REFRAIN

93

Lord is king; — he is

*Choir/Assembly*

S.A.

The Lord is king; — he is

T.B.

D<sup>b</sup> B<sup>b</sup>m7 E<sup>b</sup>m7 A<sup>b</sup>7 D<sup>b</sup> B<sup>b</sup>m7 E<sup>b</sup>m7 D<sup>b</sup>7

97

robed in maj - es - ty. The —

robed in maj - es - ty.

G<sup>b</sup> D<sup>b</sup>/F B<sup>b</sup>m7 E<sup>b</sup>m7 A<sup>b</sup> B<sup>b</sup>m A<sup>b</sup>9/C

101

Lord is king. — The — Lord is king; — he is

The — Lord is king; — he is

D<sup>b</sup> B<sup>b</sup>m7 E<sup>b</sup>m7 A<sup>b</sup>6 A<sup>b</sup>7 Fm F7/A B<sup>b</sup>m B<sup>b</sup>7

105

robed in maj - es - ty. — He is

robed in maj - es - ty. — He is

E<sup>b</sup>m7 D<sup>b</sup>/A<sup>b</sup> A<sup>b</sup> D<sup>b</sup> C<sup>b</sup>7 B<sup>b</sup>7

109

robed in maj - es - ty. He is

robed in maj - es - ty. He is

$E^b m7$   $D^b/A^b$   $A^b$   $D^b$   $C^b7$   $B^b7$

113

robed in maj - es - ty.

robed in maj - es - ty.

$E^b m7$   $A^b$   $G^b/D^b$   $D^b$