

UNTO US A CHILD IS BORN

SATB Choir a cappella, optional Assembly

Quem Vidistis
Adapt. by C.W.

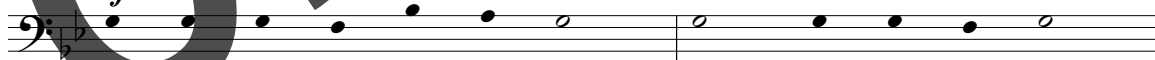
Chrysogonus Waddell, O.C.S.O., 1930–2008
Adapt. plainchant from *Liber Usualis*

INTRODUCTION

Freely $\text{♩} = \text{c. } 72$

mf

N.B. $>$



T.B.

Un - to us a child is born: Come, let us a - dore!



Un - to us a son is giv'n, Al - le - lu - ia!

REFRAIN

With longing

Choir/Assembly

mp

N.B. $>$



S.A.

Un - to us a child is born: Come, let us a - dore!

T.B.

mp



Un - to us a son is giv'n, Al - le - lu - ia!

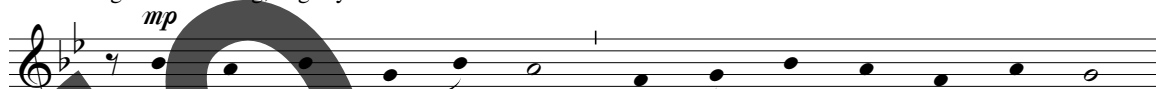


007210

Click & Print download e07210 may be purchased at wlpmusic.com.

From the music collection *Wisdom, My Road* WLP 007274, CD 007268.

VERSES

Light and dancing, slightly faster $\text{♩} = \text{c. } 86$ 

S.A.
1.-3. O shep - herds tell us, tell us, whom did you see?



T.B.
1.-3. Pro - claim the mes - sage, speak the word: who has now ap - peared on earth?



T.B.
1. We have seen the new - born Lord, and choirs of an - gels prais - ing him,
2. We have seen the sin - less Maid, the Moth - er of the new - born Lord.
3. We have seen the Word made flesh, the Word through whom all things were made,

Musical staff for Soprano (S.A.) and Tenor (T.B.) in G major, 3/4 time. The melody begins with a half note G4, followed by quarter notes A4, B4, C5, and D5. The lyrics are: Al - le - lu - ia, al - le - lu - ia.

S.A.
T.B.
1. sing - ing hymns of peace and joy,
2. Roy - al Throne for God's own Son,
3. Light who turns the night to day,