

For Megan Conway

MARANATHA! COME, LORD JESUS

SATB Choir, Cantor, Assembly, Violin, 2 C Instruments, Percussion, Guitar, Keyboard

Based on 1Cor 16:22

Steven C. Warner

REFRAIN

Dance-like, with hushed movement ♩ = c. 86

C Instrument (Violin*)

Musical notation for C Instrument (Violin*) in 4/4 time, key of D major. The melody consists of eighth notes: D4, E4, F#4, G4, A4, B4, C5, B4, A4, G4, F#4, E4, D4. The dynamic is *mf*.

Musical notation for Cantor/Choir/Assembly in 4/4 time, key of D major. The melody consists of eighth notes: D4, E4, F#4, G4, A4, B4, C5, B4, A4, G4, F#4, E4, D4. The lyrics are: Ma - ra - na - tha! Come, Lord Je - sus, T.B. The dynamic is *mf*.

Musical notation for piano accompaniment in 4/4 time, key of D major. The chords are: F#m, C#m, F#m, F#m/E, D, C#m7, F#m. The dynamic is *mf*.

Musical notation for Finger cymbals and Drum in 4/4 time. The Finger cymbals part has a dynamic of *mp*. The Drum part has a dynamic of *mp*.

007221

From the music collection *Prophets of Joy* WLP 007215, CD 007218.

*Composer suggests violin for refrain, 2 C Instruments for verses.

5

in all our long - ings, may you be near. Ma - ra - na - tha! —

Bm A7 D F#m/C# Bm C#7 F#m C#m F#m F#m/E



4 *To Verses*



To Verses

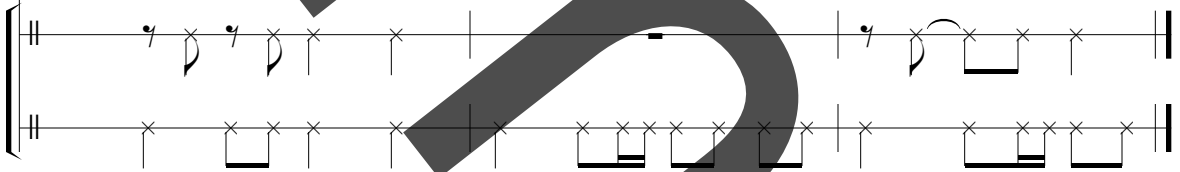


Come, Lord Je - sus: God's great ad-vent of Love!



D C#m F#m A Bm A/C# D C#m7 F#m

To Verses



Copyright

VERSES - Cycle A

10

*C Instruments**

Musical staff for C Instruments, treble clef, key signature of two sharps (F# and C#), and a common time signature. The staff contains a melodic line starting with a quarter rest, followed by eighth and quarter notes. Dynamics include *mp*.

Cantor

mf

Musical staff for Cantor, treble clef, key signature of two sharps, and a common time signature. The staff contains a melodic line with lyrics underneath. Dynamics include *mf*.

Week 1: O house of Ja - cob, — come to - geth - er,
 Week 2: A shoot will burst from the house of Jes - se,
 Week 3: The des - ert lands shall — burst and blos - som,
 Week 4: Be - hold a sign for your wea - ry spir - it,

Piano accompaniment staff, grand staff (treble and bass clefs), key signature of two sharps, and a common time signature. The staff contains a melodic line in the right hand and a bass line in the left hand. Dynamics include *mf*. Chord symbols F#m, C#m, A, and E are placed above the staff.

Musical staff for Verse 1, treble clef, key signature of two sharps, and a common time signature. The staff contains a melodic line.

Musical staff for Verse 2, treble clef, key signature of two sharps, and a common time signature. The staff contains a melodic line.

1: Walk in the light — of the Lord our — God! Our
 2: Jus - tice will be the band a - round his — waist! The
 3: All of cre - a - tion will ring out in — song! The
 4: She who is vir - gin shall bring forth a — son! The

Piano accompaniment staff for Verse 1-4, grand staff, key signature of two sharps, and a common time signature. The staff contains a melodic line in the right hand and a bass line in the left hand. Dynamics include *mf*. Chord symbols F#m, Bm, Bm/D, and C# are placed above the staff.

*C Instrument parts are represented here in Cycle A, and should be used for Cycles B and C as well. See instrumental page.

mf
f

1: days and deeds are God's own prov - ince, Stand on guard, keep
 2: proph - et's call is heard in our land: "Change your lives! God's
 3: one fore - told is in our midst; By the hand of God we
 4: King shall come and en - ter in, He shall be called "Em -

D maj7 E A F#m Bm C#m

f

To Refrain

1: watch - ful vig - il, Soon is his com - ing home!
 2: reign is with us, Make all the path - ways known!"
 3: are de - liv - ered, Saved from all our woes.
 4: man - u - el," Sav - ior, God with us.

F#m C#m Bm D Bm C#m F#m

To Refrain

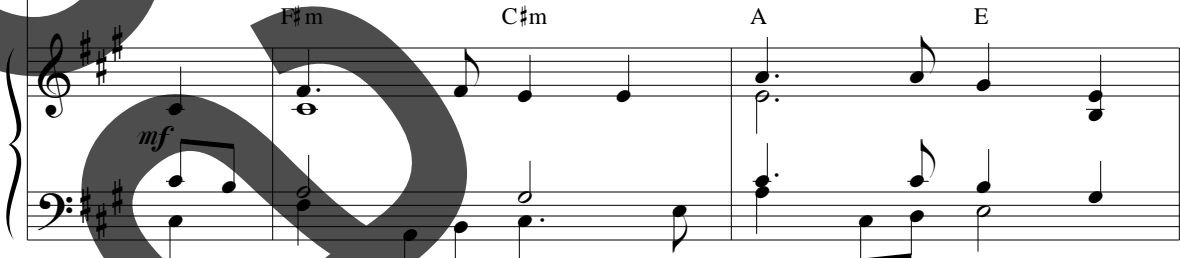
VERSES - Cycle B

Cantor
mf

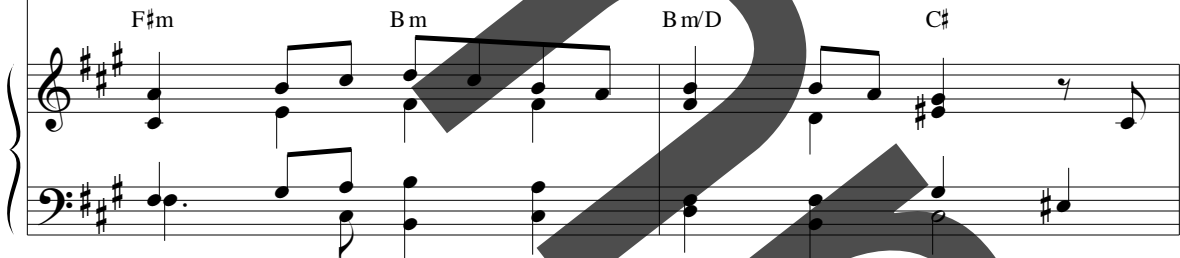
20



Week 1: — Take this vine with its with - ered branch - es,
 Week 2: Give ven - der com - fort — to my peo - ple,
 Week 3: The Spir - it of the — Lord is o'er me,
 Week 4: When Ga - bri'el came to the Vir - gin Ma - ry,



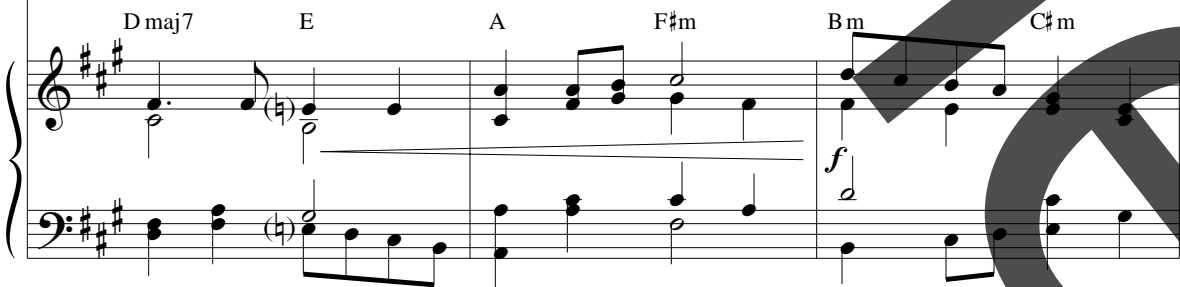
1: Care for your vine - yard with the strength of your hand. For
 2: Now is Je - ru - sa - lem pre - pared for her God! A -
 3: God has a - noint - ed me to sing to the poor. To
 4: This was the mes - sage that he shared with — her: "Re -



25



1: you are pot - ter and we are the clay, Let us turn our hearts to
 2: long the high - way and des - ert — waste, See — how the way is
 3: heal the hearts of the bro - ken, in chains, God shall be the joy of
 4: joyce, O Daugh - ter of God Most — High! Bless - ed are you a -



8 To Refrain

1: all your shap - ings, Watch - ful at break of day.
 2: cleared be - fore him, Moun - tain and hill made low!
 3: all in bond - age, Clothed in a robe of peace.
 4: mong all wom - en, Cho - sen to bear God's Son."

F#m C#m Bm/D Bm C#m F#m To Refrain

VERSES - Cycle C

30 Cantor *mf*

Week 1: The days are com - ing says the Lord when
 Week 2: Je - ru - sa - lem, cast off your sad - ness,
 Week 3: O shout for joy and sing with glad - ness,
 Week 4: To Beth - le - hem of the tribe of Ju - dah,

F#m C#m A E

mf

1: all I have prom - ised — came to — be; For
 2: put on the splen - dor of the Lord a — bove, Re -
 3: daugh - ter Je - ru - sa - lem, — lift your — heart! Re -
 4: Forth from — you shall come the prom - ised of old. His

F#m Bm Bm/D C#

35

1: un - to Ju - dah and Is - ra - el, I — will — raise a
 2: joice with glad - ness and raise your — voice: God — has com - mand - ed
 3: joice in God, I — say, re - joice! Come be - fore the Lord with
 4: feet are firm as he shep - herds his flock, All the ends of earth shall

Dmaj7 E A F#m Bm C#m

1: shoot of jus - tice, safe - ly with - in our land.
 2: hill and moun - tain, all to be made low.
 3: cries of glad - ness, Zi - on — sing your praise!
 4: sing to - geth - er, Peace til the end of time.

F#m C#m Bm/D Bm C#m F#m