

# The Finding

## The Fifth Joyful Mystery: The Finding of Jesus in the Temple

Danielle Rose

♩ = c. 90

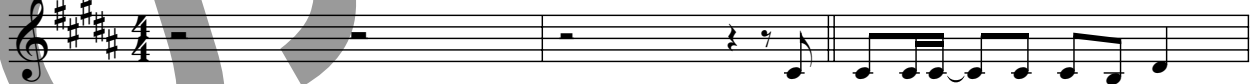
G#m

F#(add4)

E

### VERSE 1

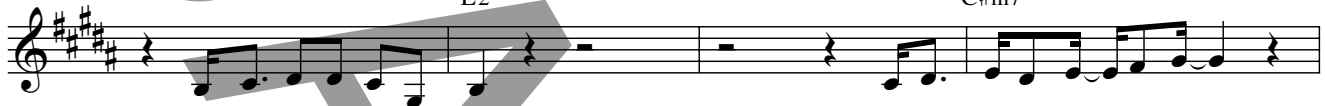
B5



1. Twelve years a-go\_\_ it all be-gan

E2

C#m7



1. with an an-gel in my dream.

I took Ma-ry as\_\_ my wife,

F#/A#

B5

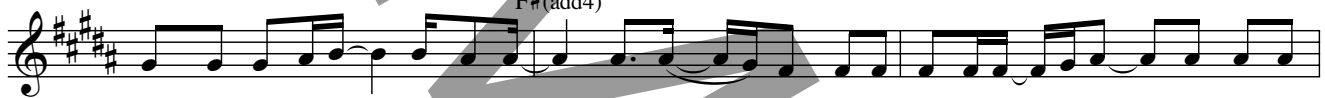
E



1. and we u-nit-ed in our ho-ly vir-gin-i - ty.

Sim-e - on\_\_ and An - na an -

F#(add4)



1. nounced his des - ti - ny. \_\_ Who am I \_\_ that God \_\_ should be o - be - di - ent \_\_ to me? \_\_ One day a

E

F#(add4)

E

Bmaj7/D# C#m7



1. car-pen-ter's son\_\_ will be nailed to a tree.

2. Three days a - go

### VERSE 2

B5

E2



2. \_\_ I held my child's small hands, God's hands that made the morn - ing. \_\_

C#m7

F#/A#



2. I am fa-ther to\_\_ a king

who has not come to rule the

B5

E



2. world. \_\_ But now my child is gone; what have I \_\_ done wrong? God \_\_

The Finding - 2

F#(add4) E

2. left me with-out warn - ing! Why would God cause me such dis-tress?

F#(add4)

2. Have I failed to live in faith - ful - ness? \_\_\_\_\_ Where did you

REFRAIN

B5 Soloist E2

go, Je - sus? I've been search-ing for days, Call-ing out your

8 Where'd you go? I'm search - ing for you.

C#m7 F#/A#

name with ev - 'ry prayer I pray. See the

8 Call your name with ev - 'ry prayer. I

B5 E2

tears of a fa - ther in search of a son. I'm so a -

8 see the tears. I'm search - ing for you,

C#m7 E F#(add4) G#m F#(add4)

fraid I did not know quite how to love.

8 so a - afraid to love.

The Finding - 3

E *To Verse 3* | E Bmaj7/D# C#m7 *To Bridge*

Trou-ble is,

VERSE 3

B5 *Soloist* E2

3. I did-n't no - tice right a - way that you were gone. I went

C#m7 F#A# B5

3. search-ing for your pres-ence a-mong friends and fam - 'ly. Nev-er has\_ one day felt\_ so

E

3. long. I did not find you there, so\_ I turned right back a - round. Oh,\_

F#(add4) E

3. where can my be - lov - ed\_ child be found? In\_ the streets and squares of\_ Je -

F#(add4) *To Refrain*

3. ru - sa - lem,\_ where is my be - lov - ed\_ now?\_ Where did you

BRIDGE

E7/D C#m7 B5

Des-p'rate for grace, I went with Ma - ry to the tem - ple to pray.\_

E7/D C#m7

We were a - ston-ished to\_ find Je - sus teach-ing the el - ders, who

The Finding - 4

G G#m

looked with won-der at his face. I ran to em - brace him. "Oh, son,

F#(add4) E F#(add4)

why have you done this to us? We've been

G#m F#(add4) E

look - ing for you. We have been so anx - ious, so

Bmaj7/D# C#m7

anx - ious, so anx - ious." Je - sus

VERSE 4

B5 E2

4. turned and said, "Why were you look - ing for me? Did you not know

C#m7 F#/A#

4. that in my Fa - ther's house I'd be? You're the

B5 E2

4. earth - ly fa - ther of the Heav - en - ly Fa - ther's Son. I will

C#m7 E F#(add4) E Bmaj7/D# C#m7

4. hide in your home till my hour comes." Je - sus

FINAL REFRAIN

*B5 Soloist* *E2*

spoke in words I could not com - pre - hend.

*Choir*  
Oo, oo.

*C#m7*

All I know is that my son was lost and has been found a -

Once was lost and

*F#/A#* *B5*

- gain. I love him as my child,

has been found. Oo,

*E2*

but re-vere him as my God. I'm the cho-sen

Je - sus, my God.

*C#m7* *E* *F#(add4)* *G#m* *F#(add4)*

fa - ther of the Lord's own per-fect love.

Oo Love.

The Finding - 6

E C#m7 E F#(add4)

What joy it is to find God's per - fect love.

Joy to find God's

Detailed description: This system contains the first line of music. The vocal line is in treble clef with a key signature of three sharps (F#, C#, G#) and a 4/4 time signature. The lyrics are "What joy it is to find God's per - fect love." The piano accompaniment is in bass clef, starting with an 8-measure rest. Chord symbols E, C#m7, E, and F#(add4) are placed above the vocal line.

B5 (1st time only) E2 3 times

God's per - fect love.

(1st & 2nd times only)

Love. Love.

Detailed description: This system contains the second line of music. The vocal line is in treble clef with the same key signature and time signature. The lyrics are "God's per - fect love." The piano accompaniment is in bass clef. A first ending bracket is shown above the vocal line, labeled "3 times". A second ending bracket is shown below the piano line, labeled "(1st & 2nd times only)". Chord symbols B5 and E2 are placed above the vocal line.

B5

Detailed description: This system contains the third line of music, which is a single staff in bass clef. It begins with an 8-measure rest, followed by a whole note chord. The chord symbol B5 is placed above the staff.