

CHRISTMAS HYMN

SATB Choir, optional Soloist, Assembly, Guitar, Keyboard
(optional Violin and Cello)

Paul A. Tate

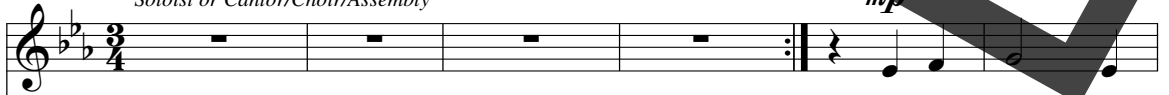
INTRODUCTION

Moderately ♩ = c. 136

Soloist or Cantor/Choir/Assembly

VERSE 1

mp



1. Son of God and

E^b B^b/E^b Fm/E^b B^b/E^b E^b E^b/D

mp



1. Vir - gin Moth - er, Word made flesh, Em - man - u -

A^b/C Fm E^b/B^b A^b E^b/G Fm7



I, el, Son of Man, our ver - y broth - er,

B^b7sus E^b E^b/D A^b/C Fm E^b/B^b

008444

Click & Print download e08444 and Instrumental parts e08439 may be purchased at wlpmusic.com.
From the CD *Unto Us* WLP 007374.

Copyright © 2010, World Library Publications
3708 River Road, Suite 400, Franklin Park, IL 60131-2158. All rights reserved.
Unauthorized duplication is against the law.

17

1. hope for all on earth who dwell Light in

A^b E^b/B^b Cm Fm7 B⁷ E^b Gm7

22

1. dark - ness, prom - ised Sav - ior, shine in us for

Cm7 Fm7 B⁷sus B^b Gm7 Cm7

27

1. all to see; rule the world with peace and

Fm7 B⁷sus E^b/G Cm7 A^b

32

1. jus - tice, come to set your peo - ple free.

E^b/G Fm7 E^b/G A^b B⁷ E^b

VERSE 2

37 S.A. *mf* melody 2. Un - to us a

B^b/E^b Fm7/E^b B^b/E^b E^b E^b/D

42 2. child is giv - en, un - to us a child is

A^b/C Fm/B^b E^b/B^b A^b E^b/G Fm7

47 2. born. Lord of earth and Lord of heav - en,

B^b7sus E^b E^b/D A^b/C Fm/B^b E^b/B^b

52 2. comes to us on Christ - mas morn. Hope for all who

A^b E^b/B^b Cm Fm7 B^b7 E^b Gm7 Cm7 *mf*

58

2. dwell in sad-ness, love for all who live in shame.

Fm7 B^b sus B^b Gm7 Cm7 Fm7 B^b sus

64

2. Frag-ile babe yet might - y Sav - ior, name a - bove all

E^b/G Cm7 A^b E^b sus/G E^b/G Fm7 E^b/G

70

2. oth - er names!

A^b B^b7 E^b E^b/D B^b/C C

VERSE 3

Cantor/Choir/Assembly

75 *f*

S.A.
3. Kings and proph - ets, seers and sa - ges, wis - i -

T.B.

f

F F/E B^b/D C7 F/C B^b

80

3. tors from near and far praise the gift of end - less

F/A Gm7 C7sus F F/E B^b/D

86

3. a - ges sleep - ing 'neath the guid - ing star. Ma - gi

C7 F/C B^b F/C Dm Gm7 C7 F Am7

92

3. bear - ing gifts most pre - cious hum - bly bow on bend - ed

Dm7 Gm7 Csus C Am7 Dm7 Gm7

98

3. knee. - Hail the new - born King - of glo - ry, wel - come

Csus C F/A Dm7 B^b F/A Gm7

104

3. heav - en's mys - ter - y.

This system contains the first two staves of music. The top staff is a vocal line in treble clef with a key signature of one flat and a common time signature. It features a melodic line with lyrics "3. heav - en's mys - ter - y." and a sustained chord. The bottom staff is a piano accompaniment in bass clef, providing harmonic support with chords and a simple bass line.

F/A B^b C7 F F/A Am7 D

This system contains the piano accompaniment for the first system. It shows the chord progression: F/A, B^b, C7, F, F/A, Am7, and D. The notation includes both treble and bass clefs with notes and rests.

VERSE 4

110 *Unison ff*

4. All the earth, pro - claim the glo - ry, ev - 'ry

Unison

This system marks the beginning of Verse 4 at measure 110. It features a vocal line and a piano accompaniment, both marked with a forte (*ff*) dynamic and the instruction "Unison". The lyrics are "4. All the earth, pro - claim the glo - ry, ev - 'ry".

ff

G G/F# C/E Gsus/D G/D C D/C

This system shows the piano accompaniment for the start of Verse 4. It includes the forte (*ff*) dynamic and the chord progression: G, G/F#, C/E, Gsus/D, G/D, C, and D/C. The notation is in both treble and bass clefs.

115

4. na - tion, ev - 'ry town! Let all peo - ple

This system continues Verse 4 at measure 115. It features a vocal line and a piano accompaniment. The lyrics are "4. na - tion, ev - 'ry town! Let all peo - ple".

G/B Am7 D7 G G/F#

This system shows the piano accompaniment for the second part of Verse 4. It includes the chord progression: G/B, Am7, D7, G, and G/F#. The notation is in both treble and bass clefs.

120

4. sing the sto - ry of the night that

C/E G/D C G/D Em

124

4. Love came down. Sound the trum - pet, raise your

Am7 D7 G Bm7 Em7 Am7

129

4. voic - es, broth - er, sis - ter, strang - er, friend! Hail the

mp

Dsus D Bm7 Em7 Am7 Dsus D/C G/B

mp

135

4. Christ, our Lord and Sav - ior, source of grace that

Em7 C G/B Am7 G/B

140

4. has no end.

C D7 G D/G Am/G D/G

145

rit.

G(add2) D/G Am/G D/G G(add2)