

COME, LORD JESUS

SAB Choir, Descant, Cantor, Assembly, Guitar, Keyboard

Frederick P. Annie

John Angotti

Keyboard arr. by Ed Bolduc

INTRODUCTION

$\text{♩} = c. 48$

Musical score for the introduction, featuring a grand staff with treble and bass clefs. The music is in 6/8 time and begins with a mezzo-piano (*mp*) dynamic. The right hand plays a melodic line with a half note followed by a quarter note, while the left hand provides a simple accompaniment. Chords C and Csus are indicated above the staff.

REFRAIN

⁵ Descant after vs. 2

Musical score for the refrain, featuring vocal lines and a keyboard accompaniment. The vocal parts include Cantor/Assembly, S.A., and B. The keyboard part is in the grand staff. The music is in 6/8 time and begins with a mezzo-forte (*mf*) dynamic. The lyrics are: "Come, Lord Je - sus. Come, Lord Je - sus. Ve - ni, Je - su Do-mi-ne." Chords C, Em, F(add2), and G are indicated above the keyboard staff.

008452

Click & Print download e008452 may be purchased at www.wlpmusic.com.

From the recording *Welcome Home for Christmas* WLP 008282.

9 To Verses

Do-mi-ne.

To Verses

Come, Lord Je - sus. Come, Lord Je - sus. Ve - ni, Je - su Do-mi-ne. _____

Come, Lord Je - sus. Ve - ni, Do-mi-ne. _____

C Em F(add2) G To Verses

VERSE 1

13 *mf* Cantor

1. Come, Lord Je-sus. Gath-er with us, lift us from sin, raise us in your

mp Choir

S.A. _____ ah, _____

B. _____

mp *div.*

mf

B^b maj7 C/B^b Am7 Dm

To Refrain

1. mer-cy, lead us to your king-dom. Be with us to - day.

To Refrain

1. ah, ah.

Gm7 F/A B^b E^b maj7

VERSE 2

Cantor

21 *mf*

2. Come, Lord Je-sus. Speak to us, — an-nounce a year of fa - vor. Pro-claim your

optional Harmony

mf

2. Come, Lord Je-sus. Speak to us, — an-nounce a year of fa - vor. Pro-claim your

Choir

mp

S.A. 2. Ah, ah,

B.

mp

div.

B^b maj7 C/B^b Am7 Dm

25

To Refrain

2. gos-pel, preach your king-dom. We lis - ten for your voice.

2. gos-pel, preach your king-dom, your voice.

To Refrain

2. ah. ah.

Gm7 F/A B^b E^b maj7

To Refrain

BRIDGE

29 Cm(add2) A^b maj7 B^b Cm(add2) A^b maj7 B^b

mp

33 Cantor *mp*

Come, O come, Em - man - u - el.

Descant

Ooh.

Cm(add2) A^b maj7 B^b Cm(add2)

6

36

Come, O come, E - man - u -

Come, O come, Em - man - u -

A^b maj7 B^b Cm(add2) A^b maj7 B^b

39

el. Come, O come, Em -

el. Come,

Cm(add2) A^b maj7 B^b A^b maj7

42

man-u - el.

Em - man - u - el.

B^b/A^b A^b maj7 B^b/A^b C

FINAL REFRAIN

Cantor/Assembly

47

f



Come, Lord Je - sus. Come, Lord Je - sus. Ve - ni, Je - su Do-mi-ne._____

Descant

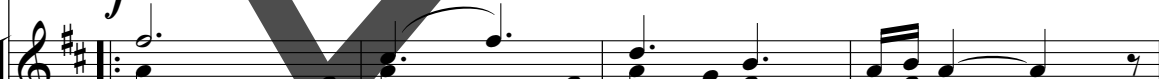
f



Come, Lord Je - sus._____ Ve - ni, Je - su.

Choir

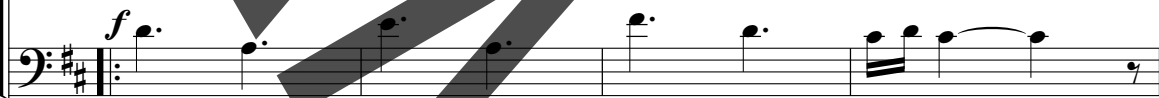
f



Ve - ni, Je - su Do-mi-ne._____



Come, Lord Je - sus. Come, Lord Je - sus. Ve - ni, Je - su Do-mi-ne._____



Come, Lord Je - sus. Ve ni, Do-mi-ne._____

D

F#m7

G(add2)

A



f



Come, Lord Je - sus. Ve ni, Do-mi-ne._____

51

Come, Lord Je - sus. Come, Lord Je - sus. Ve - ni, Je - su Do-mi-ne. _____

Do-mi-ne

Ve - ni, Je - su Do-mi-ne. _____

Come, Lord Je - sus. Come, Lord Je - sus. Ve - ni, Je - su Do-mi-ne. _____

Come, Lord Je - sus. Ve - ni, Do-mi-ne. _____

D F#m7 G(add2) A

Cantor/Assembly
mf

55

Come, Lord Je - sus. Come, Lord Je - sus. Ve - ni, Je - su

D F#m G(add2)

mf

58

Do-mi-ne. Come, Lord Je - sus. Come, Lord Je - sus.

A D F#m

61

Ve - ni, Je - su Do - mi - ne.

G(add2) Gmaj7 A D

rit.

Engraved and printed in U.S.A.