

# HOLY TRINITY

SATB Choir, Descant, Assembly, Guitar, Keyboard

M. D. Ridge

Timothy R. Smith

## INTRODUCTION

♩ = c. 112

Fmaj7/A

C(add2)/E

C/F

G7

Csus2

Csus C

mp

## VERSES 1, 2

Unison choir (optional Men only)/Assembly

**mf** unison

7

1. We are not made to be a - lone: made in your like - ness,

Choir/Assembly

**mf**

S.A.

2. All of cre - a - tion sings your name; bright stars and plan - ets

T.B.

**mf** unison

C

G/B F(add2)/A

C/F

G

Am

C Cmaj7/E

Fsus2

**mf**

008911

Click & Print download e08911 may be purchased at [wlpmusic.com](http://wlpmusic.com).

Artwork: Copyright © Eugene Plaisted. Used by permission.

Copyright © 2013, World Library Publications  
3708 River Road, Suite 400, Franklin Park, IL 60131-2158. All rights reserved.  
Unauthorized duplication is against the law.

13

1. claimed as your own,                    nur - tured in dark - ness, born to light,

2. dance their ac - claim.                Crea - tures of sky and sea and land,

F(add2)/A      G/B      G      Am                    C/E                    B $\flat$ /F                    B $\flat$ /D

19

1. Liv - ing to praise you day and night.

2. All that have breath come from your hand.

Fmaj7/A      C(add2)/E      C/F                    Gsus                    C                    Csus      C

REFRAIN

25

*unison*

S.A. Ho - ly, ho - ly Trin - i - ty, un - di -

T.B. *unison*

B<sup>b</sup> F/A F Gsus G B<sup>b</sup>

30

vid - ed u - ni - ty.

F/A F Dm G/B G Am Em Dm9

35 G/B G Am Em/G C/E F G/F F

VERSE 3

41 Women/Assembly

3. God un - cre - a - ted shared our breath, lived our life ful - ly,

Cmaj7 F(add2)/A Fmaj7 Am9 Cmaj9 C/F

47

S.A.  
T.B.

3. e - ven to death, ris - ing that we might live a - new,

*sotto voce*  
F(add2)/A G/A Am9 Cmaj7/E B<sup>b</sup>(add2)/F B<sup>b</sup>(add2)/D

53

unison

3. ris - ing that we might rise with you.

Am9 Cmaj7/E C/F G7sus C Csus C

REFRAIN

59 *Descant*

Ho - ly, ho - ly ——— Trin - i - ty,

*Choir/Assembly*

S.A.

T.B.

B<sup>b</sup> F(add2)/A F Gsus G

This system contains the first four measures of the refrain. It features a vocal line with lyrics 'Ho - ly, ho - ly ——— Trin - i - ty,' and a piano accompaniment. The piano part includes a descant in the first measure. Chord symbols B<sup>b</sup>, F(add2)/A, F, Gsus, and G are indicated above the piano staff.

63

un - di - vid - ed u - ni - ty ———

un - di - vid - ed u - ni - ty.

B<sup>b</sup> F(add2)/A F Dm G/B G

This system contains the next four measures of the refrain. The vocal line continues with the lyrics 'un - di - vid - ed u - ni - ty ———' and 'un - di - vid - ed u - ni - ty.' The piano accompaniment continues with the same harmonic structure. Chord symbols B<sup>b</sup>, F(add2)/A, F, Dm, G/B, and G are indicated above the piano staff.

VERSE 4

68

S.A.  
4. You are the wind that drives us on, — voice in the still - ness,

T.B.

C G/B F(add2)/A C/F G Am C Cmaj7/E F(add2)

74

4. whis - per of dawn, — wis - dom and truth, our guide and friend,

F(add2)/A G/B G Am(add2) C/E B<sup>b</sup>(add2)/F B<sup>b</sup>/D

80

4. peace in our hearts till jour - ney's end.

This system contains the first two staves of music. The top staff is a vocal line with lyrics: "4. peace in our hearts till jour - ney's end." The bottom staff is a piano accompaniment. A large, dark watermark "SAMPLE" is overlaid on the left side of the page, partially covering the vocal line.

Fmaj9/A C(add2)/E C/F G7sus C Csus C

This system contains the piano accompaniment for the first system. It includes chord symbols: Fmaj9/A, C(add2)/E, C/F, G7sus, C, Csus, and C. A large, dark watermark "SAMPLE" is overlaid across the middle of the page, passing through this system.

REFRAIN

86

*Descant*  
Ho - ly, ho - ly Trin - i - ty,

*Choir/Assembly*  
S.A. Ho - ly, ho - ly Trin - i - ty,  
T.B. Ho - ly, ho - ly Trin - i - ty,

This section is titled "REFRAIN" and starts at measure 86. It features three vocal parts: a Descant, Soprano Alto (S.A.), and Tenor Bass (T.B.). The lyrics are "Ho - ly, ho - ly Trin - i - ty,". A large, dark watermark "SAMPLE" is overlaid across the middle of the page, passing through this section.

B<sup>b</sup> F(add2)/A Gsus G

This system contains the piano accompaniment for the Refrain section. It includes chord symbols: B<sup>b</sup>, F(add2)/A, Gsus, and G. A large, dark watermark "SAMPLE" is overlaid across the bottom right of the page, partially covering this system.

90

un - di - vid - ed u - ni - ty.

un - di - vid - ed u - ni - ty.

B<sup>b</sup> F(add2)/A F Dm G/B G

95

Am Dm9 G/B G Am C/E F G/F Fmaj7 G/F G

VERSE 5

102 *Choir/Assembly*

5. More than your glo - ry and your power, your love gives life each

C G/B F(add2)/A C/F G Am C Cmaj7/E Fsus2



108 *Descant*



5. Gath - er your own in love pro - found;

*Choir/Assembly*



5. day and hour. Gath - er your own in love pro - found;

F(add2)/A G/B G Am(add2) C/E B<sup>b</sup>(add2)/F B<sup>b</sup>/D

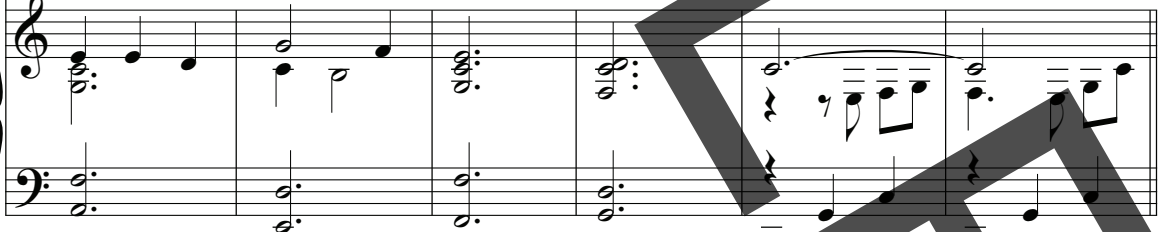


5. bind us in love as you are bound.



5. bind us in love as you are bound.

Fmaj9/A Em7 C/F G7sus C Csus C



REFRAIN

120 *Descant*

Ho - ly, ho - ly Trin - i - ty,

Choir/Assembly

S.A.

T.B.

B<sup>b</sup> F(add2)/A F Gsus G

un - di - vid - ed u - ni - ty. *rit.*

un - di - vid - ed u - ni - ty. *rit.*

B<sup>b</sup> F(add2)/A F Dm G/B G

*rit.*