

# He Is Risen

Jacob Israel Villalobos, Matthew Leon,  
& Michael Paul Leon

## INTRODUCTION

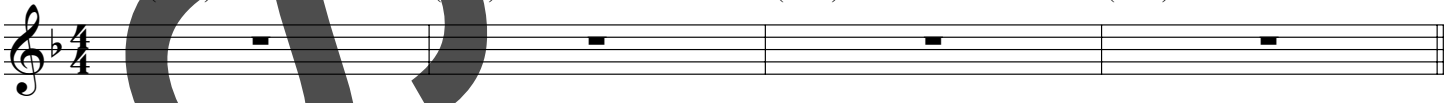
♩ = c. 66

Capo III: G(add2)  
B<sup>b</sup>(add2)

D(add2)  
F(add2)

G(add2)  
B<sup>b</sup>(add2)

D(add2)  
F(add2)



## VERSES 1, 2

G(add2)  
B<sup>b</sup>(add2)

D(add2)  
F(add2)

G(add2)  
B<sup>b</sup>(add2)

D(add2)  
F(add2)



1. By the wa - ters of — re - demp - tion, —  
2. From the nails — in — his hands and feet,

By the blood on Cal - va - ry, —  
From the thorns that pierced his brow, —

G(add2)  
B<sup>b</sup>(add2)

D(add2)  
F(add2)

G(add2)  
B<sup>b</sup>(add2)

D(add2) A/C#  
F(add2) C/E



1. Brings grace to my — af - flic - tion — And sets the cap - tives free. —  
2. Flow springs — of — con - tri - tion — Deep with - in — us now. —

## REFRAIN

G(add2)  
B<sup>b</sup>(add2)

D  
F

A  
C

Asus  
Csus

A  
C

G(add2)  
B<sup>b</sup>(add2)

D  
F

A  
C

Asus  
Csus

A  
C



For he — is ris - en. For he — is King. For

G(add2)  
B<sup>b</sup>(add2)

D  
F

A  
C

Asus  
Csus

A  
C

Em7  
Gm7 (let ring)

A/C#  
C/E

1.  
N.C.



he — won sal - va - tion There on the tree.

2.  
N.C.

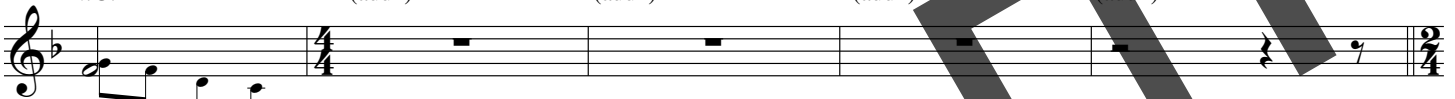
G(add2)  
B<sup>b</sup>(add2)

D(add2)  
F(add2)

G(add2)  
B<sup>b</sup>(add2)

D(add2)  
F(add2)

To Refrain



tree.

Original key: A<sup>b</sup>

From the CD *Every Day* WLP 017355.

Copyright © 2009, World Library Publications  
3708 River Road, Suite 400, Franklin Park, IL 60131-2158

www.wlpmusic.com. All rights reserved. Unauthorized duplication is against the law.

es17355-E



He Is Risen - 2

3.  
N.C.

**G(add2)**  
B $\flat$ (add2)

**D(add2)**  
F(add2)

**G(add2)**  
B $\flat$ (add2)

**D(add2)**  
F(add2)

**G(add2)**  
B $\flat$ (add2)

tree, on the tree,

**D(add2)**  
F(add2)

**G(add2)**  
B $\flat$ (add2)

**D(add2)**  
F(add2)

**G(add2)**  
B $\flat$ (add2)

**D(add2)**  
F(add2)

**G(add2)**  
B $\flat$ (add2)

there on the tree, there on the tree.

**D(add2)**  
F(add2)

**G(add2)**  
B $\flat$ (add2)

**D(add2)**  
F(add2)

**G(add2)**  
B $\flat$ (add2)

**D**  
F

Engraved in U.S.A.