

# MASS OF JOY

Two-Part Children's Choir, Cantor, Assembly, Guitar

## Kyrie

Kathleen Denny

Arr. by Jeffrey Honoré

*♩ = c. 84*

D D/F# G Asus A D D/F#  
Cantor/Choir *mp*

Ky - ri - e, e -

G Asus A G A D A D D/F#  
+Assembly *mf* Cantor/Choir *mp*

le - i - son. Lord, have mer - cy. Chri - ste, e -

G Asus A G Em7 G/A A  
+Assembly *mf*

le - i - son. Christ, have mer - cy.

D D/F# G Asus A Em7 D/A A7 Em7/D D  
Cantor/Choir *mp* +Assembly *mf* *rit.* *mp*

Ky - ri - e, e - le - i - son. Lord, have mer - cy.

018031

Music copyright © 2005, World Library Publications

Click & Print download e18031; Full score available, e18030; Flute part available, e18032; Optional handbells part available, e18033 may be purchased at [wlpmusic.com](http://wlpmusic.com).

Approved for publication by the United States Conference of Catholic Bishops, Secretariat for the Committee on Divine Worship, Monsignor Anthony Sherman, Executive Director.

The English translation of the Alleluia verses and the Lenten Gospel Acclamation from the *Lectionary for Mass*, copyright © 1969, 1981, 1997, International Commission on English in the Liturgy Corporation. (ICEL). English translation of the Glory to God; Holy, Holy, Holy. We Proclaim Your Death, O Lord; When We Eat This Bread; and Save Us, Savior of the World, from *The Roman Missal*, copyright © 2010, ICEL. All rights reserved.

Music copyright © 2005, 2010, World Library Publications  
3708 River Road, Suite 400, Franklin Park, IL 60131-2158. All rights reserved.  
Unauthorized duplication is against the law.

# Glory to God

Kathleen Denny  
Arr. by Jeffrey Honoré and  
Kathleen Denny

## INTRODUCTION

$\text{♩} = \text{c. } 140$

D D/F# A7 D

Musical notation for the introduction, measures 1-4. The key signature is two sharps (F# and C#), and the time signature is 4/4. The notes are: D4, E4, F#4, G4, A4, B4, C5, B4, A4, G4, F#4, E4, D4.

## REFRAIN

D/F# G Asus A

*Cantor/Choir*

**f**

Musical notation for the first part of the refrain, measures 5-8. The notes are: D4, E4, F#4, G4, A4, B4, C5, B4, A4, G4, F#4, E4, D4.

Glo-ry to God\_ in the high - est, and on

Musical notation for the second part of the refrain, measures 9-12. The notes are: D4, E4, F#4, G4, A4, B4, C5, B4, A4, G4, F#4, E4, D4.

earth peace to peo-ple of good will.

D D/F# G Asus A

*+Assembly*

Musical notation for the third part of the refrain, measures 13-16. The notes are: D4, E4, F#4, G4, A4, B4, C5, B4, A4, G4, F#4, E4, D4.

Glo-ry to God\_ in the high - est, and on

## VERSE 1

D D/F# D/A A7 D

G A D D/F#

*Cantor/Choir*

**mf**

Musical notation for the first part of Verse 1, measures 17-20. The notes are: D4, E4, F#4, G4, A4, B4, C5, B4, A4, G4, F#4, E4, D4.

earth peace to peo-ple of good will.

1. We praise you, we bless\_ you, we a -

G A D D/F# G A F#m Bm

Musical notation for the second part of Verse 1, measures 21-24. The notes are: D4, E4, F#4, G4, A4, B4, C5, B4, A4, G4, F#4, E4, D4.

1. dore you, we glo-ri - fy you, -

we give you thanks for your great glo - ry,

Em D/F# G Bm Asus A D G D/F# G Bm A/C# Bm Asus A G Bm7 A7

Musical notation for the third part of Verse 1, measures 25-28. The notes are: D4, E4, F#4, G4, A4, B4, C5, B4, A4, G4, F#4, E4, D4.

1. Lord God, heav-en - ly King, - O God, al - migh - ty Fa - ther.

## REFRAIN

D D/F# G Asus A D D/F#

*+Assembly*

Musical notation for the first part of the second refrain, measures 29-32. The notes are: D4, E4, F#4, G4, A4, B4, C5, B4, A4, G4, F#4, E4, D4.

Glo-ry to God\_ in the high - est, and on earth

peace to peo-ple

Musical notation for the second part of the second refrain, measures 33-36. The notes are: D4, E4, F#4, G4, A4, B4, C5, B4, A4, G4, F#4, E4, D4.

of good will.

Glo-ry to God\_ in the high - est, and on

VERSE 2

Cantor/Choir  
*mp*

D D/F# D/A A7 D G A D G A

28  
earth peace to peo-ple of good will. 2. Lord Je- sus Christ, On- ly Be- got- ten

D G A F#m Bm G D/F# Em D/F#

33  
2. Son, Lord God, Lamb of God, Son of the

A D/F# Em7 D/F# G D Bm D Em D/F#

37  
2. Fa- ther, you take a- way the sins of the world, have mer- cy on

Asus Em7 D/F# G D D/F# Em G

41  
2. us; you take a- way the sins of the world, re- ceive our

Asus A *mp* A9 D(add2)/A Em7 D/F# G Bm

45  
2. prayer; you are seat- ed at the right hand of the Fa- ther, have

REFRAIN

+Assembly  
*f*

A/C# Bm Asus A G Bm7 A7 D D/F# G Asus A

49  
2. mer- cy on us. Glo- ry to God in the high est, and on

D D/F# G Asus A D D/F# G Asus A

53  
earth peace to peo-ple of good will. Glo- ry to God in the high- est, and on

VERSE 3

D D/F# D/A A7 D G A D Bm

Cantor/Choir  
*mf*

57  

 earth peace to peo-ple of good will. 3. For you a - lone are the Ho-ly One,

G A D G A D A/C# Bm7

61  

 3. you a - lone are the Lord, you a - lone are the Most High,

G D/F# Em Bm/D A/C# A Em7 D/F# G D/F#

65  

 3. Je - sus Christ, with the Ho - ly Spir - it, in the glo - ry of

FINAL REFRAIN

Em7 D/F# G Bm A/C# Bm Asus A Bsus F#m7 B B7

E E/G#  
+Assembly  
*ff*

69  

 3. God the Fa - ther. A - men, a - men. Glo-ry to God in the

A Bsus B E E/G# A Bsus B

73  

 high - est, and on earth peace to peo-ple of good will.

E E/G# A Bsus B E E/G#

76  

 Glo-ry to God in the high - est, and on earth peace to peo-ple

E/B B7 E E/G# B B7 E

79  

 of good will.

# Gospel Acclamation

Kathleen Demmy  
Arr. by Jeffrey Honoré

## INTRODUCTION

$\text{♩} = c. 120$

G D/F# D G A D

## REFRAIN

G D/F# D G A D D/F#  
*Cantor/Choir*

*f*

Al - le - lu - ia, al - le - lu - ia,

G D/F# D G A D +Assembly G D/F# D G A D D/F#

al - le - lu - ia, al - le - lu - ia. Al - le - lu - ia, al - le - lu - ia,

1. G D/F# G A D 2. G rit. D/F# D G A D

al - le - lu - ia, al - le - lu - ia. al - le - lu - ia, al - le - lu - ia.

## VERSES

G A D Bm G A G/D D  
*Cantor/Choir*

1. Speak, O Lord, your servant is listening;
2. I am the light of the world, says the Lord;
3. Your words, O Lord, are spirit and life;
4. I am the way, and truth, and life, says the Lord;
5. My sheep listen to my voice, says the Lord;

17 G A F#m Bm7 G G/B A To Refrain

1. you have the words of ever - last - ing life.
2. all who fol - low me will have the light of life.
3. you have the words of ev - er - last - ing life.
4. no one shall come to God, ex - cept through me.
5. I know them and they fol - low me.

\*Optional canon on final refrain.

# Lenten Gospel Acclamation

Kathleen Denny  
Arr. by Jeffrey Honoré

## INTRODUCTION

♩ = c. 110

G D/F# D G A D

## REFRAIN

*Cantor/Choir*

G D/F# D G A D D/F#

***f***

Praise to you, Lord Je - sus Christ,

5 G D/F# D G A D

king of end - less glo - ry!

+Assembly G D/F# D G A D D/F#

Praise to you, Lord Je - sus Christ,

9 G D/F# D G A D

king of end - less glo - ry!

## VERSE

*Cantor/Choir*

***mf***

G A D G A

If to - day you hear God's

14 D G A F#m Bm G G/B A

voice, hard - en not your hearts, hard - en not your hearts.

## REFRAIN

*Cantor/Choir/Assembly*

19 G D/F# D G A D D/F# G D/F# D G A D

***f***

Praise to you, Lord Je - sus Christ, king of end - less glo - ry!

23 G D/F# D G A D D/F# G D/F# D G A D

Praise to you, Lord Je - sus Christ, king of end - less glo - ry!

# Intercessions

Kathleen Denny  
Arr. by Jeffrey Honoré

## INTRODUCTION

♩ = c. 84

D

G

## \*RESPONSE

D

G

Cantor/Choir/Assembly

*mf*

Hear our prayer, O Lord, \_\_\_\_\_

— hear our prayer, O Lord.

Lord.

\*Response may be played under spoken intercessions.

# Holy, Holy, Holy

Kathleen Denny  
Arr. by Jeffrey Honoré and Kathleen Denny

*♩ = c. 100*  
 D D/F# G Asus A D D/F# G Asus A  
*Cantor/Choir/Assembly*  
*mf*  
 Ho - ly, Ho - ly,

5 D D/F# G A D D/F#  
 Ho - ly Lord God of hosts. Heav-en and earth are

8 G A Bm7 A/C# A7 Bm D Em7 A7 Dsus D  
 full of your glo - ry. Ho - san - na in the high - est.

12 *mf cresc.* G D/F# G D/F# Em/B Asus A  
 Bless - ed is he who comes in the name of the Lord. Ho -

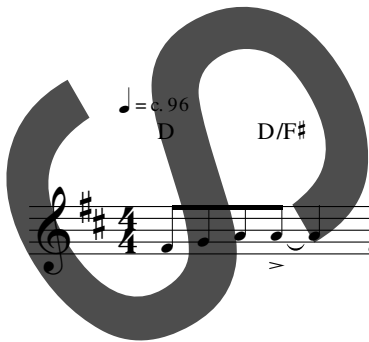
15 Bm D Em A7 Bm E7/G# A7 Bm D Em7 A7 Dsus D  
*f* *ff*  
 san - na in the high - est. Ho - san - na in the high - est.



# We Proclaim Your Death, O Lord

Kathleen Demmy

Arr. by Jeffrey Honoré and Kathleen Demmy



♩ = 96

D D/F# G A D D/F# G A

*Cantor/Choir/Assembly*

*mf*

We pro-claim your Death, O Lord,

Em7 A D(add2)/A A7 Bm D Em7 A7 Dsus D

*mf*

*rit.*

and pro-fess your Res-ur-rec-tion un - til you come a - gain. —



# When We Eat This Bread

Kathleen Demmy

Arr. by Jeffrey Honoré and Kathleen Demmy

*♩ = c. 96*

D D/F# G D D/F# G

*Cantor/Choir/Assembly*  
*mf*

When we eat — this Bread

A A/C# D G

5 and drink this Cup, we pro - claim your Death, O

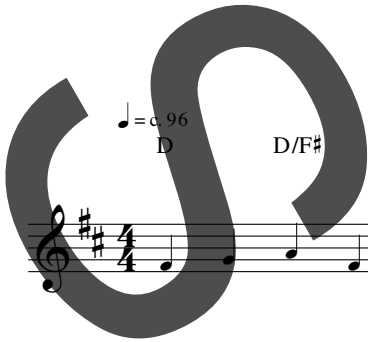
G/A Asus A A7 Bm D/F# Em7 A7 Dsus D

*mf rit.*

8 Lord, — un - til you come a - gain. —

# Save Us, Savior of the World

Kathleen Denny  
Arr. by Jeffrey Honoré and Kathleen Denny



♩ = c. 96  
D

D/F#

G

Asus A

D

D/F#

G

Asus A

*Cantor/Choir/Assembly*

*mf*



Save us, Sav - ior of the world,

Em

A

D(add2) A/C# Bm7 A7

Bm

D/F# Em7 A7

Dsus

D

*mf*



for by your Cross and Res - ur - rec - tion you have set us free. —

*rit.*



# Great Amen

Kathleen Denny  
Arr. by Jeffrey Honoré

*Cantor/Choir/Assembly*

$\text{♩} = \text{c. } 96$

G D/F# D G A D D/F# G D/F# D G A D D/F#

*f*

A - men, a - men,

1. G D/F# D G A D

2. G D/F# D G A7 D *rit.*

a - men, a - men. a - men, a - men.

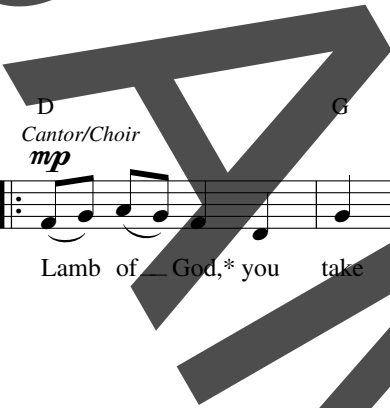
\*Optional canon

# Lamb of God

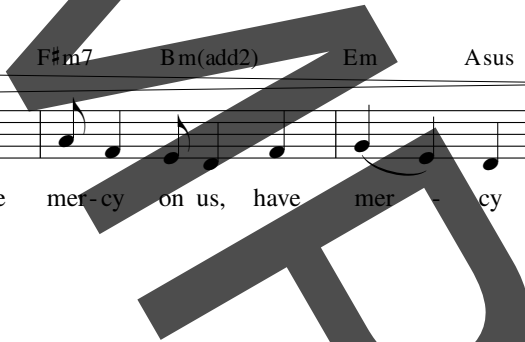

Kathleen Demmy  
Arr. by Jeffrey Honoré



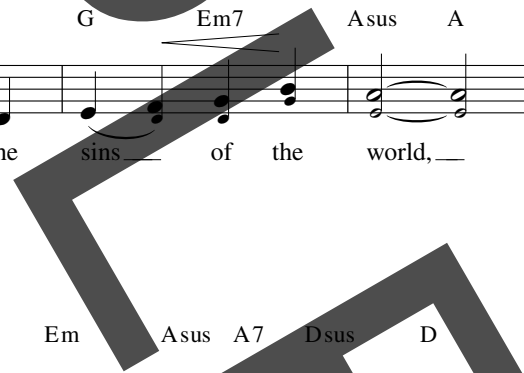

♩ = c. 84  
D G Dmaj7/F# G Em7 Asus A



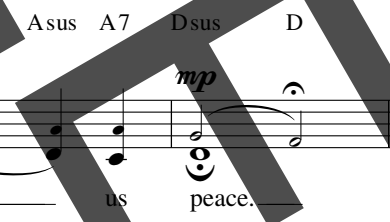

5  
Cantor/Choir *mp* D G Dmaj7/F# G Em7 Asus A *mf* +Assembly  
Lamb of God,\* you take a - way the sins of the world, have




9  
Em7 A7 F#m7 Bm(add2) Em Asus A7 Dsus D  
mer-cy on us, have mer-cy on us, have mer-cy on us.



13  
Cantor/Choir *mp* G Dmaj7/F# G Em7 Asus A  
Lamb of God, you take a - way the sins of the world,



17  
Em7 A7 F#m7 Bm(add2) Em Asus A7 Dsus D  
*mf* *decresc.* *rit.* *mp*  
grant us peace, grant us peace, grant us peace.



\*This section may be sung more than twice, as needed. Other titles for Christ may be substituted.

Engraved and printed in U.S.A.